

Manual class definition

One of the options in the “Select method” drop-down box is “manual choice”. Using this option you can define the limits for the selected number of classes on your own. If you select this option and press “OK”, there will be an additional button “Edit Classes” below the legend (see the illustration below).

The screenshot shows the CentropeSTATISTICS web interface. On the left, the 'Statistics for Live births per 1,000 inhabitants 2018' are displayed:

Count:	3507
Minimum:	0
Mean:	111.042
Median:	9.52
Maximum:	333.33
Variance:	145.541
Std. Dev.:	12.064

The 'Select' section shows 'Method' set to 'Manual choice', 'Classes' set to 6, and 'Colour ramp' set to 'Red to Purple to Blue'. The 'Legend' section shows the following class ranges:

0 - 55.56
55.56 - 111.11
111.11 - 166.67
166.67 - 222.22
222.22 - 277.78
277.78 - 333.33

A red arrow points to the 'Edit classes' button located below the legend.

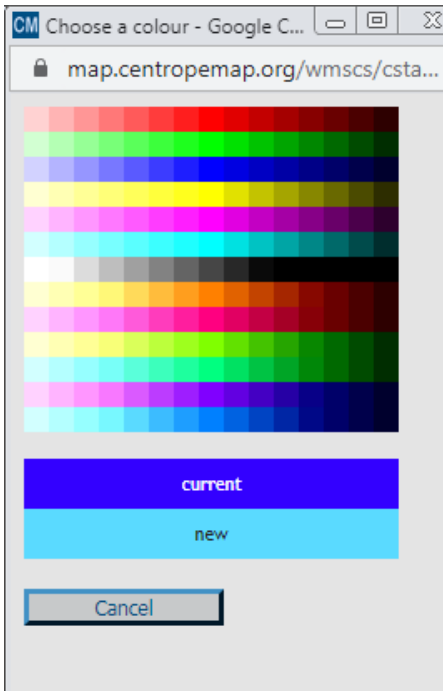
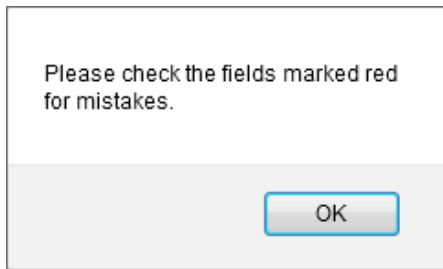
The 'Edit classes' pop-up window shows a table with input fields for class limits:

0	55.56
55.56	111.11
111.11	166.67
166.67	222.22
222.22	277.78
277.78	333.33

Buttons for 'Apply' and 'Cancel' are visible at the bottom.

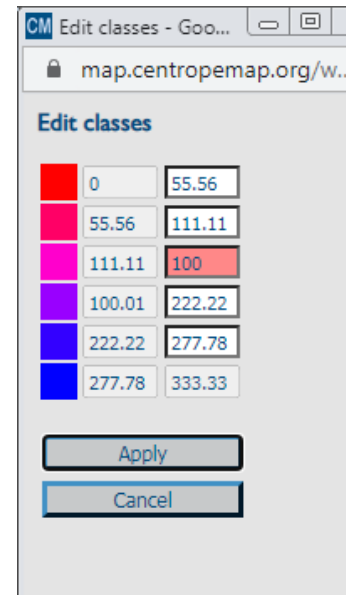
A pop-up window opens (see illustration on the left). In this window, you can edit the upper limits of each but the last class. The lower limits are automatically calculated from the upper limits of the previous class, the minimum and the maximum values cannot be changed as they are given by the original data.

If you press the “Apply” button, the input fields are checked for errors. If there are any errors (e. g. an upper class limit is lower than the upper class limit of the previous class or the input is not a number), the affected fields are shown in red and a message appears (see next page):



Confirm the message, then correct the input in the red fields and press “Apply” again. If everything is correct, the pop-up closes and the map preview is redrawn using the class values of your choice.

In the edit window the user also has the possibility to change the legend colours one by one (instead of selecting a predefined colour ramp from the drop-down box on the left). To edit a colour, simply click on the colour square left of the class value input fields. Another window shows up and asks you to pick a colour. To choose a colour, move the mouse over the colour matrix. A comparison of the current and the new colour is given at the bottom of the window. Click on the colour to select it. The colour window will then disappear and you can see the new colour in the edit window. To apply both colours and values to the map preview, click the “Apply” button in the “Edit classes” pop-up window. The map preview is automatically reloaded then. Note



that pressing the “Apply” button in the map preview window at this point will keep the values, but restore the default colours. Therefore, the change of class colours should always be your last step before you click the “Create map” button.